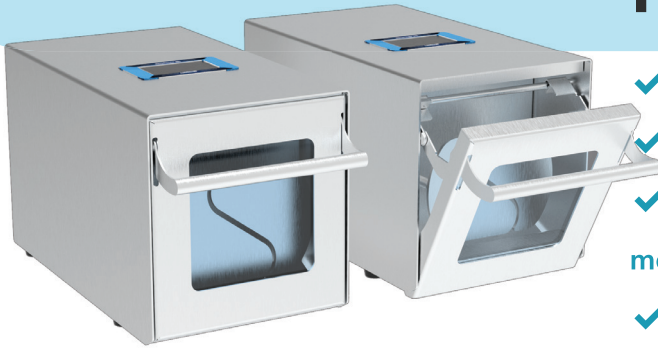


## LAB BLENDER

# KingBlender 400

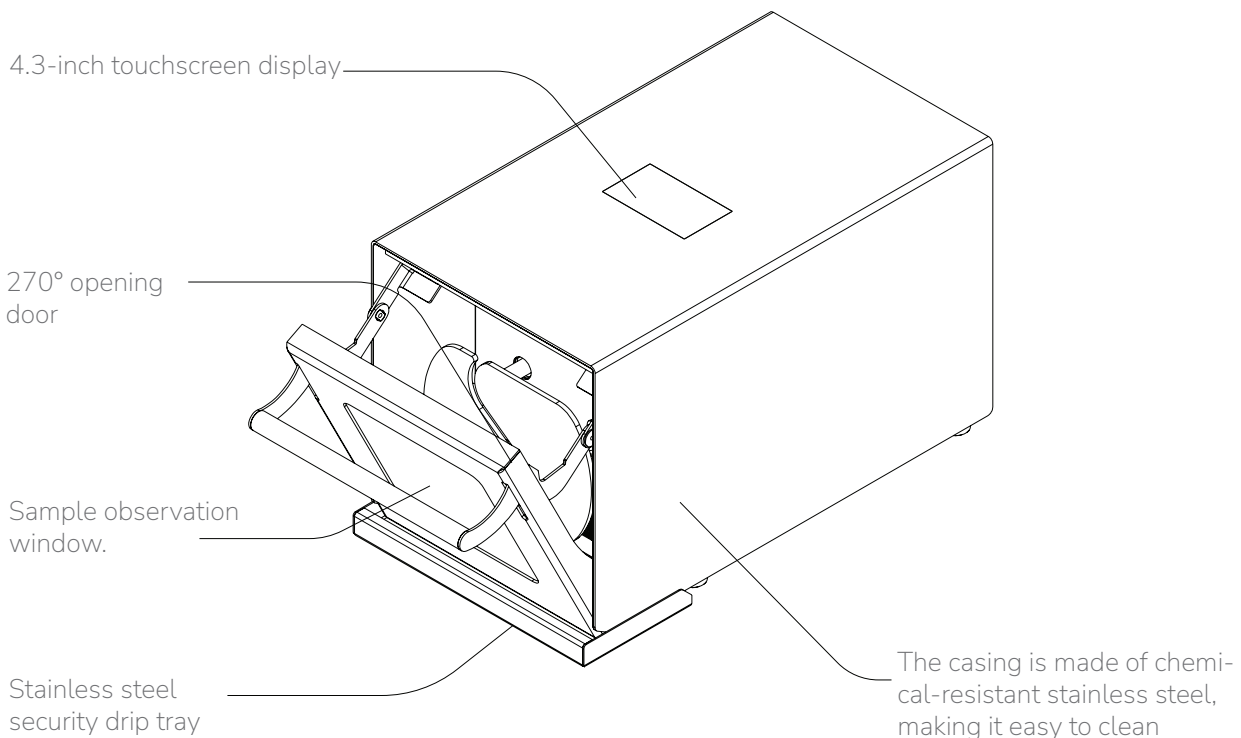


- ✓ Compact size
- ✓ Portability for easy movement
- ✓ Equipped with an observation window for monitoring the process
- ✓ Liquid leakage detection sensor
- ✓ User-friendly interface

## PURPOSE

**KingBlender 400** - Lab blender is a powerful device used for rapidly and conveniently mixing and homogenizing microbiological samples, ensuring accurate and efficient results in microbiological sample preparation.

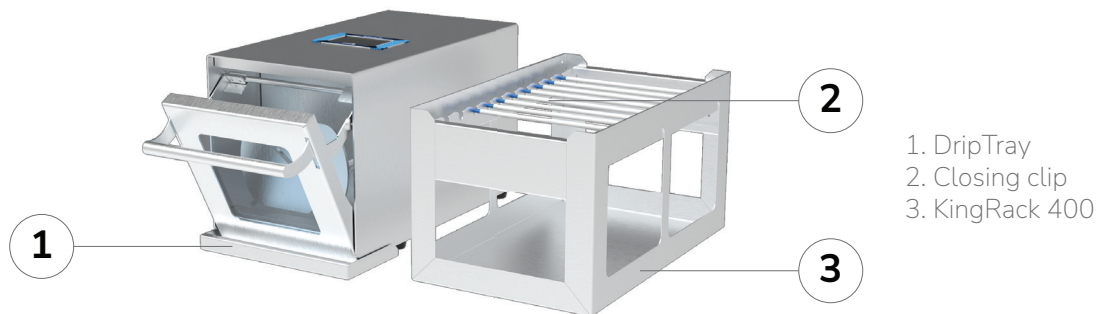
## CONSTRUCTION


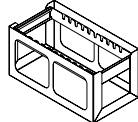
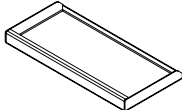



## SPECIFICATIONS

Model	KingBlender 400
External dimensions (LxWxH)	L260 x W395 x H220 mm
Weight	20.7kg
Material	Stainless steel
Optimal blending volume	50-400mL
Speed	08 strokes / second
Sample blending adjustment time: 1 second to continuous and preset.	10, 20, 30, 60, 90, 120 second
Opening door	270° opening door
Window door	✓
Liquid leak detection sensor	✓
Input voltage	220/240V 50Hz

## ACCESSORIES



Products	Order Code	Description
 <p>NovaBag 400 is a blender bag without filter. It is ideal for sample preparation</p>	NovaBag 400	Blender bag, 400mL, 180x300 mm, 25 Bags/Pouches, Gamma-ray Sterile
 <p>BagRack</p>	KingRack 400	BagRack allows the clean and orderly storage of bags during sample preparation
 <p>DripTray</p>	KingDripTray	DripTray compatible with Model KingBlender400
 <p>Closing clip</p>	KingClip	KingClip is a temporary closing clip. It fits all types of bags.